



**Gymnix Classic**  
**March 3-6, 2016**

Claude-Robillard Sports Complex  
Montreal, Quebec  
CANADA

Montreal, October 13, 2015

Dear gymnastics friends,

It is with great pleasure that we invite you to compete in the **2016 Gymnix Classic**, which will be held **March 3<sup>rd</sup> to 6<sup>th</sup>, 2016** in Montreal, Quebec. This event, organized jointly with *L'International Gymnix*, is the largest gathering of gymnasts of all ages and levels, celebrating a shared passion for the sport.

JO Levels 6 to 10 and National stream categories are welcomed to compete in the 2016 Gymnix Classic. Registrations can be done online at [www.internationalgymnix.ca](http://www.internationalgymnix.ca). Please note that registrations will be done on a first-come, first-served basis. If you need help choosing the appropriate category for your gymnasts, please send an email to [amjanviau@gymnix.ca](mailto:amjanviau@gymnix.ca). It will be our pleasure to help you.

The Gymnix Classic is also a unique opportunity to witness the performances of some of the best gymnasts in the world who come to Quebec specifically to take part in *L'International Gymnix*. For example, Lilia Podkopayeva, Carly Patterson, Shawn Johnson, Aliya Mustafina, Jordyn Wieber and many other famous gymnasts have tumbled on the floor of *L'International Gymnix* before becoming World and Olympic champions.



*L'International Gymnix* will celebrate its 25th anniversary this year! Our 25th edition will be colourful, entertaining and festive and will welcome once again some of the world's best gymnasts. When registering for the 2016 Gymnix Classic, gymnasts and coaches can enjoy free access to all competition sessions of *L'International Gymnix*! **This means that you will be able to attend the performance of several rising stars of the international gymnastics and some of the 2016 Rio Olympians!**

We hope many of you will join us to celebrate this unique sport that is artistic gymnastics. Rest assured that the organizing committee is working hard to organize a quality event highlighting the true beauty and excitement of the sport.

We are looking forward to welcoming you to our beautiful city.

Best regards,

Anne-Maud Jan Viau  
CEO – L'International Gymnix  
[amjanviau@gymnix.ca](mailto:amjanviau@gymnix.ca)

## Table of contents

<b>1. Competition venue</b>	<b>4</b>
<i>Address:</i>	4
<i>Contact:</i>	4
<i>Competition areas:</i>	4
<i>Equipment:</i>	4
<i>Music:</i>	4
<b>2. Categories</b>	<b>5</b>
JO LEVELS 6 to 10	5
NATIONAL STREAM (CANADIAN ASPIRE AND NOVICE)	6
<b>3. Steps to online registration</b>	<b>6</b>
<b>4. How to register your gymnasts and coaches</b>	<b>8</b>
<b>5. Deadlines</b>	<b>10</b>
<b>6. Withdrawal fees</b>	<b>10</b>
<b>7. Lodging</b>	<b>12</b>
<b>ANNEX 1</b>	<b>13</b>
<b>ANNEX 2</b>	<b>14</b>

## 1. Competition venue

**Address:** Claude-Robillard Sports Complex  
1000 Emile-Journault  
Montreal, Quebec, Canada  
H2M 2E7

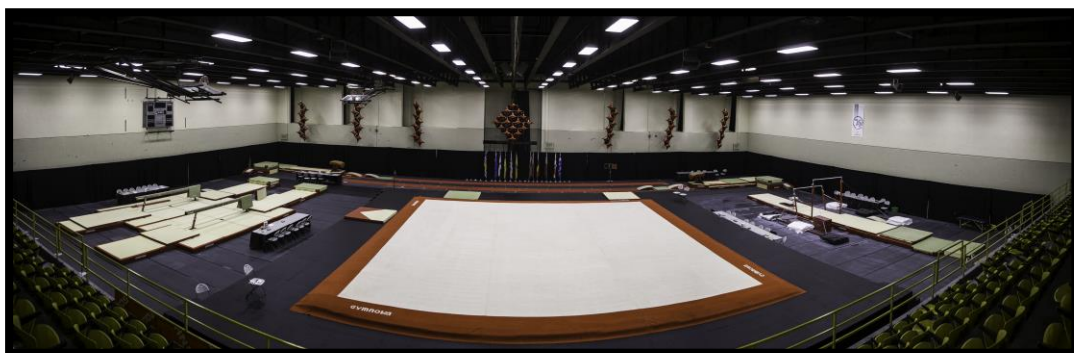
**Contact:** Tel: 514-872-1536 ext. 227  
Fax: 514-872-1590  
Email: [am.janviau@gymnix.ca](mailto:am.janviau@gymnix.ca)  
Website: [www.internationalgymnix.ca/en/](http://www.internationalgymnix.ca/en/)

### Competition areas:

#### OMNISPORTS ROOM



#### DOUBLE GYMNASIUM



**Equipment:** GYMNOVA equipment  
Omnisport Room: All events on podium  
Double Gymnasium: Floor on podium

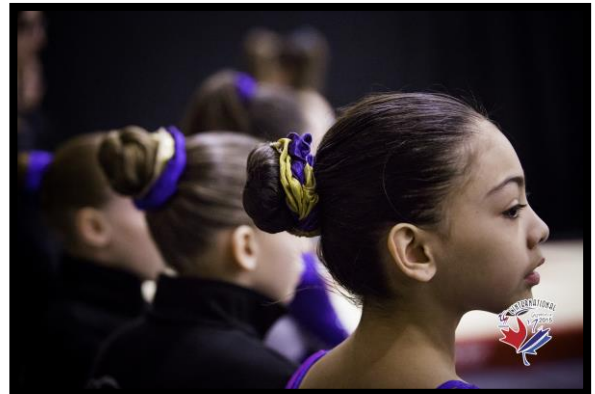
**Music:** MP3 Music (More details soon)  
CD only for floor music (1 CD per athlete)

Gymnix Classic  
1000 Emile-Journault Avenue, Montreal (QC), H2M 2E7  
[www.internationalgymnix.ca](http://www.internationalgymnix.ca)

## 2. Categories

### JO LEVELS 6 to 10

Registration fees	\$115 per gymnast, \$50 per coach A participation gift will be given to all athletes and coaches
Requirements	<p>JO Levels 6, 7, 8, 9, 10 – <b>Canadian JO Rules</b>  A summary of the Canadian JO rules is available here :  <a href="http://www.gymcan.org/uploads/files_files/PROG-CAN-JO-2015-AUG-15-15.pdf">http://www.gymcan.org/uploads/files_files/PROG-CAN-JO-2015-AUG-15-15.pdf</a>  Specific apparatus rules (permissible boards, heights, mats, etc.) will be posted on the event website.</p> <p><b>JO Levels 6 to 10 : Born 2007 and older</b></p> <p><b>Registration are done by level only. Age categories will be decided by the OC after the registration period.</b></p>
Warm-up area	Gymnix facility (2 <sup>nd</sup> basement) or Double Gymnasium
Competition area	Double Gymnasium      OR      Omnisports Room * <b>Floor on podium</b> *      * <b>All events on podium</b> *
Equipment	Gymnova Canada
Awards	Individual: - All-Around: Top 8 per category - Event: Top 8 per category * Please note that for 2016, ties will not be broken when allocating the awards. For example, if two athletes finish in second position, the bronze medal will still be awarded*



## NATIONAL STREAM (CANADIAN ASPIRE AND NOVICE)

Registration fees	\$115 per gymnast, \$50 per coach A participation gift will be given to all athletes and coaches
Requirements	<p>Canadian Aspire Program Requirements : 2015-2016 Canadian Aspire program <b>Aspire One: Born 2007-2006-2005</b> Aspire Two: Born 2006-2005</p> <p>Novice Canada Requirements : FIG 1, 2013-2016 code of points, effective Canadian model HP <a href="http://www.gymcan.org/uploads/files_files/PROG-HP-2015-16%20Aug15-15.pdf">http://www.gymcan.org/uploads/files_files/PROG-HP-2015-16%20Aug15-15.pdf</a> Born in 2005-2004-2003 All gymnasts born in those years can participate in this category, not only the HP.</p>
Warm-up area	Omnisports Room or Double Gymnasium Note: Please note that there is a possibility of no specific warm-up (30 sec) in the event that the timed warm-up takes place in the competition gym (Omnisports Room)
Competition area	Double Gymnasium      OR      Omnisports Room * <b>Floor on podium</b> *      * <b>All events on podium</b> *
Equipment	Gymnova Canada
Awards	<p>Individual: - All-Around: Top 8 per category - Event: Top 8 per category * Please note that for 2016, ties will not be broken when allocating the awards. For example, if two athletes finish in second position, the bronze medal will still be awarded *</p>



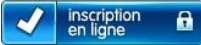
### 3. Steps to online registration

All registrations to the 2016 Gymnix Classic can be done online through our website ([www.internationalgymnix.ca](http://www.internationalgymnix.ca)), using AMILIA, a secured and user-friendly system. Please note that **only** online registrations will be accepted.

To ensure that your entries are properly made, please take the time to carefully read the instructions below. It is important to complete all required fields of the registration form, since the list of participants, the judges' sheets, the competition program and the results will be printed based upon the information you have entered in the online registration system.

The online registration system is designed to be used by gymnastics clubs **only**. Therefore, we kindly ask that you do not let your athletes and / or their parents register themselves. In case of any problems or questions, we will contact the person in charge at your gymnastics club directly.

Please follow these easy steps:

1. Visit the event website at: <http://internationalgymnix.ca/en/participants/registration/>
2. Click on the provided link  . You will immediately be redirected to the AMILIA website.

Thereafter, simply follow the instructions displayed on your screen. You can also refer to the additional information presented in this document.

**If you have already created an AMILIA account for the past years, please use the same username and password for the 2016 edition. This way, you will have access to all records of the gymnasts and coaches registered in the past and will not have to complete the information again for those participants.**

---

#### NEW FOR 2016

Following the online registration, you will be asked to provide 3 documents for each of your gymnasts:

- Form – Authorization Request *Image rights*
- Gymnast picture
- MP3 File – Floor music

*\*More info in November\**

For additional information on registration:

ANNE-MAUD JAN VIAU

CEO – L'International Gymnix

**EMAIL:** [am.janvau@gymnix.ca](mailto:am.janvau@gymnix.ca)

Gymnix Classic

1000 Emile-Journault Avenue, Montreal (QC), H2M 2E7

[www.internationalgymnix.ca](http://www.internationalgymnix.ca)

## 4. How to register your gymnasts and coaches

Go to <http://internationalgymnix.ca/en/participants/registration/> and click on the provided link,  
or simply visit [www.amilia.com](http://www.amilia.com)

### **STEP 1: IDENTIFICATION**

1. Register your username by clicking on **new user** (if you already have a username, simply log in your account)
2. Click on **Get Started**
3. Select the program **L'INTERNATIONAL & LA CLASSIQUE GYMNIX 2016** (bottom of the page)

### **STEP 2: YOUR ORDER**

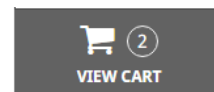
4. **Coaches** registration :
  - Click on **Entraîneur/Coach**
  - Click on the category needed: "La Classique Gymnix", "L'International Gymnix" or "Classique & International".
  - Click on **Session**
  - Click on ALL the coaches concerned by this category or click on **Add a person** to add some coaches that are not on the list.

Repeat these steps for each category in which you wish to register coaches.

5. **Athlete's** registration :
  - Click on the category needed : LA CLASSIQUE GYMNIX or L'INTERNATIONAL GYMNIX
  - Click on **Session** for the category needed.
  - Click on ALL the gymnasts concerned by this category or click on **Add a person** to add some gymnasts that are not on the list.

Repeat these steps for each category in which you wish to register gymnasts.

6. Click on **shopping cart** (black rectangle at the right top of the page).
7. Click on **CHECKOUT**. You arrive at your order with all the details.
8. If everything is right, click again on **CHECKOUT**.





### **STEP 3: YOUR INFORMATION**

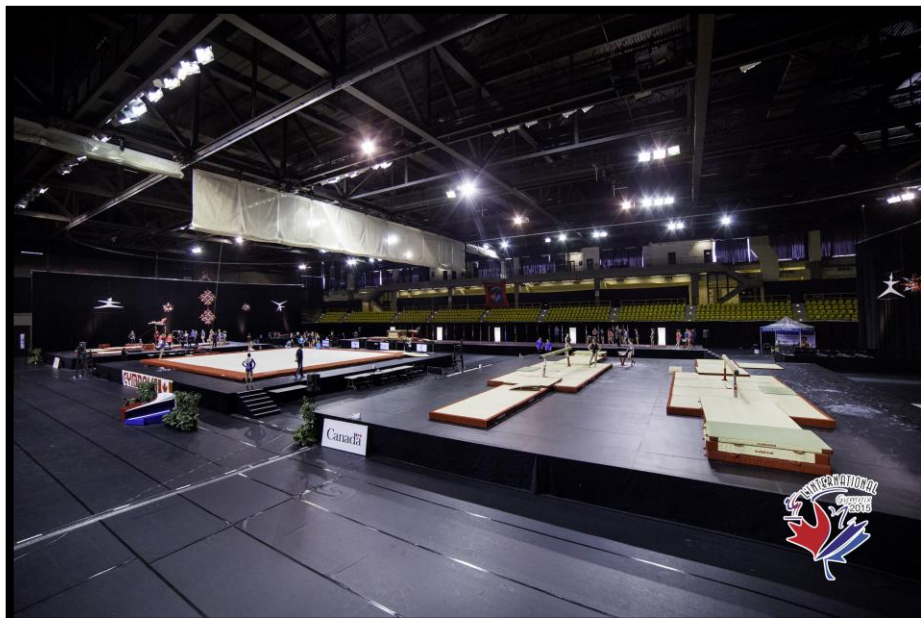
9. Confirmation of info concerning the account owner. He will be responsible for managing the coaches and athletes registrations, as well as the payment of registration fees.
  - Complete all required info **(with your club info and not the personal details of the account owner)**
  - Click on **Continue my purchase**
10. Confirmation of info concerning the coaches and gymnasts.
  - Complete all required info **(with your club info and not the personal details of the coaches)**
  - Confirm the name of the first respondent for each gymnast (this may be her personal coach, head coach or the account holder)
  - Click on **Continue my purchase**

### **STEP 4: PAYMENT**

11. Complete the payment section (credit card only) and check the box **I accept the legal conditions.**
12. Click on **Pay now** (Please be aware that a 6% administrative fee will be added to each transaction).

### **STEP 5: CONFIRMATION**

13. A confirmation email will be sent with the transaction receipt.

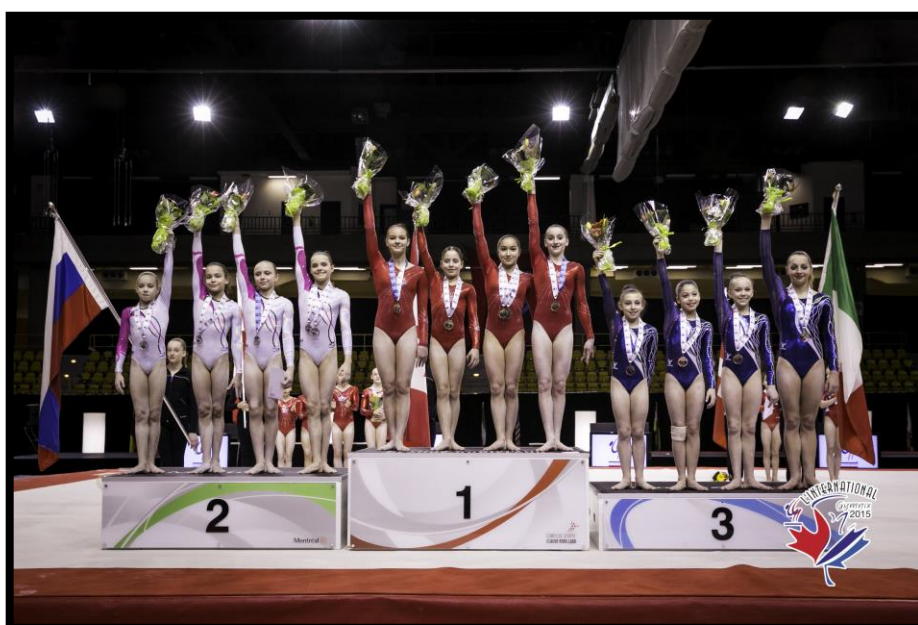


## 5. Deadlines

<b>October 26, 2015</b> 3 pm	<ul style="list-style-type: none"> <li>Opening of the registration for L'International &amp; La Classique Gymnix 2016</li> </ul>
<b>November 15, 2015</b>	<ul style="list-style-type: none"> <li>Registration deadline for L'International &amp; La Classique Gymnix 2016 <i>(After this date, only modifications to existing registrations will be allowed)</i></li> </ul>
<b>December 15, 2015</b>	<ul style="list-style-type: none"> <li>Deadline for non-medical withdrawals WITH REFUND* <i>(After this date, no refund will be provided for withdrawal without a medical certificate).</i></li> <li>Deadline for medical withdrawals (medical certificate required) WITH FULL REFUND <i>(After this date, refund for medical withdrawal will still be accepted. However, a \$10 administrative fee will be charged).</i></li> </ul>
<b>January 15, 2016</b>	<ul style="list-style-type: none"> <li>Deadline for any modification to an existing registration</li> </ul>
<b>February 10, 2016</b>	<ul style="list-style-type: none"> <li>Deadline for medical withdrawals (medical certificate required) WITH REFUND* <i>(After this date, no refund will be provided for withdrawals)</i></li> </ul>

*\* Please note that an additional \$10 administrative fee will be charged for any refund request.\**

**Please notify us of any withdrawals as soon as possible (even if the deadline for a refund has passed). This greatly facilitates the event preparation. In order to ensure the quality of the event, we will be very strict with regards to compliance with the mentioned deadlines. We thank you in advance for your collaboration.**



Gymnix Classic  
1000 Emile-Journault Avenue, Montreal (QC), H2M 2E7  
[www.internationalgymnix.ca](http://www.internationalgymnix.ca)

## 6. Withdrawal fees

### NON-MEDICAL WITHDRAWAL

Before/On December 15 <sup>th</sup>	–	Refund, minus a \$10 administrative fee
After December 15 <sup>th</sup>	–	No refund

### MEDICAL WITHDRAWAL (medical certificate required)

Before/On December 15 <sup>th</sup>	–	Full refund
After December 15 <sup>th</sup>	–	Refund, minus a \$10 administrative fee
After February 10 <sup>th</sup>	–	No refund

For any modification, withdrawal notice or refund request, please complete Annex 1 (Modification request) or Annex 2 (Withdrawal notice) attached, and send them by email to [am.janvieu@gymnix.ca](mailto:am.janvieu@gymnix.ca).



## 7. Lodging

You will find below the list of official hotels for L'International & La Classique Gymnix 2016. Participants are responsible of making their own reservation:

	<b>Lord Berri</b>	<b>Marriott Residence Inn Montreal</b>	<b>Marriott Courtyard Montreal Airport</b>	<b>Sheraton Laval</b>	<b>Holiday Inn Laval Montréal</b>
<b>Address</b>	1199 Berri Montreal (Quebec), H2L 4C6	2170 avenue Lincoln Montreal (Quebec), H3H 2N5	7000 place Robert Joncas Montreal (Quebec), H4M 2Z5	2440 Autoroute des Laurentides Laval (Quebec), H7T 1X5	2900 boul. le Carrefour Laval (Québec), H7T 2K9
<b>Prices</b>	99\$ + taxes* <i>Downtown Near Berri metro station</i>	Suite with kitchen 119\$ + taxes* <i>Swimming Pool Breakfast included</i>	125\$ + taxes* <i>Swimming Pool Airport shuttle</i>	\$135 + taxes* <i>Swimming Pool</i>	Standard Room - 129\$ + taxes* Deluxe Room - 139\$ + taxes* <i>Swimming Pool</i>
<b>Reservation</b>	1-888-363-0363 (toll-free) 514-845-9236 Fax : (514) 845-5754 Code: <i>International Gymnix 2016</i>	<a href="#">ONLINE RESERVATION</a> 1-800-678-6323 (sans frais) 514-380-8151 (ext : 2619) <a href="mailto:reserve@residencemontreal.com">reserve@residencemontreal.com</a> Code: <i>Gymnix</i>	1-888-339-5339 (toll-free) Fax : (514) 339-5606 Code: <i>Gymnix International</i>	<a href="#">ONLINE RESERVATION</a> 1-800-667-2440 (toll-free) 450-687-2440 Code: <i>International Gymnix 2016</i>	<a href="#">ONLINE RESERVATION</a> <a href="mailto:info@hilaval.com">info@hilaval.com</a> 1-888-333-3140 (toll-free) Fax : (450) 687-6616 Code: <i>International Gymnix</i>
<b>Deadline</b>	February 2 <sup>nd</sup> , 2016	February 10 <sup>th</sup> , 2016	February 2 <sup>nd</sup> , 2016	February 2 <sup>nd</sup> , 2016	February 3 <sup>rd</sup> , 2016
<b>Website**</b>	<a href="http://www.lordberri.com">www.lordberri.com</a>	<a href="http://www.residencemontreal.com">www.residencemontreal.com</a>	<a href="http://www.mmtla.ca">www.mmtla.ca</a>	<a href="http://www.sheraton-laval.com">www.sheraton-laval.com</a>	<a href="http://www.hilaval.com">www.hilaval.com</a>

\* Please note that federal tax (5%), provincial tax (9.5%), and the tax on lodging of 3% (Laval) or 3.5% (Montreal) apply per room per night on all services.

\*\* Preferential rates negotiated for our group are not available when making your reservation online through the hotel's website.

You must call to make your reservation (except for the Holiday Inn).

## ANNEX 1

**MODIFICATION REQUEST**

(Correction of a misspelled name, Category change, etc.)

Any amendment to a registration must be done in writing. Please complete and send this form by email at: [am.janviau@gymnix.ca](mailto:am.janviau@gymnix.ca).

**Deadline for registration modification: January 15, 2016**

Club Information			
Club			
Contact person			
Email			
Phone number			
Athlete Information			
Last name, first name			
Birthday (dd/mm/yyyy)		Current category (BEFORE the requested modification, if applicable)	

Modifications	
Corrected spelling	
Corrected category	
Others	

Head coach's signature: \_\_\_\_\_

Date (dd/mm/yyyy): \_\_\_\_\_

**\*One athlete per form\***

## ANNEX 2

## WITHDRAWAL NOTICE

(With or without refund)

### Medical withdrawal

- Medical withdrawal must be done in writing. Please complete, sign and send the form below, accompanied by a legible copy of a valid medical certificate, by email at: [am.janviau@gymnix.ca](mailto:am.janviau@gymnix.ca)
- Refund requests for a medical reason must be accompanied by a medical certificate. NO REFUND WILL BE GRANTED WITHOUT A COPY OF THE MEDICAL CERTIFICATE.
- Take note that a \$10 administrative fee will be charged for all medical refund requests received after December 15<sup>th</sup>, 2015.
- **No refund will be issued after February 10<sup>th</sup>, 2016.**
- Refund will be mailed within 30 business days following the last day of competition.

### Non-medical withdrawal

- Non-medical withdrawals must be made in writing. Please complete, sign and send the form below by email at: [am.janviau@gymnix.ca](mailto:am.janviau@gymnix.ca), by **December 15<sup>th</sup>, 2015 at the latest.**
- No refund (except for medical reasons) will be issued after December 15<sup>th</sup>, 2015.
- Take note that a \$10 administrative fee will be charged for all non-medical refund requests.

Club Information			
<b>Club</b>			
<b>Contact person</b>			
<b>Email</b>			
<b>Phone number</b>			
Athlete Information			
<b>Last name, first name</b>			
<b>Birthday (dd/mm/yyyy)</b>		<b>Category</b>	

Head coach's signature : \_\_\_\_\_

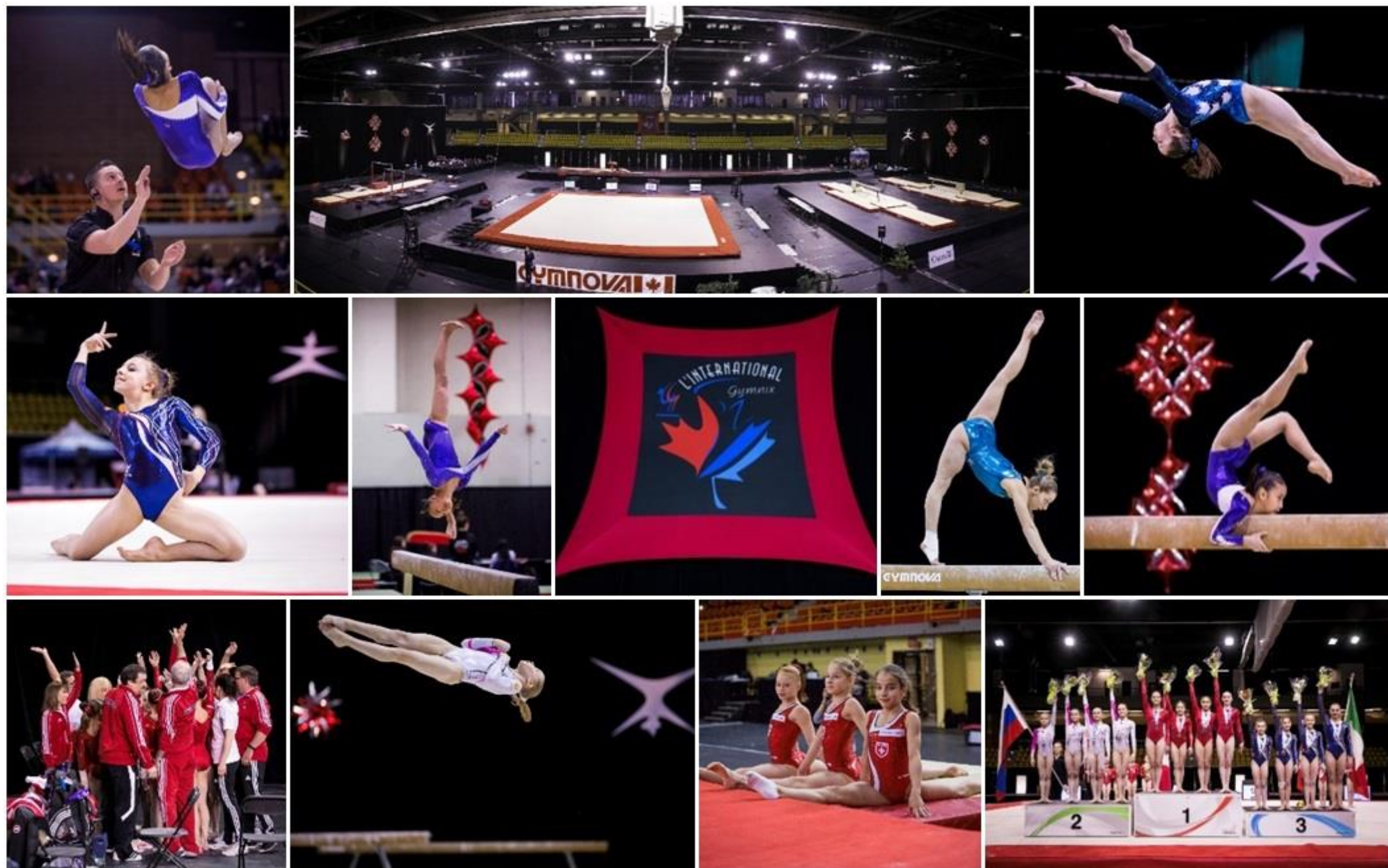
Date (dd/mm/yyyy) : \_\_\_\_\_

\*\*\* The refund will be mailed within 30 business days following the last day of competition \*\*\*

\*\*\* For questions or information, please send an email to: [am.janviau@gymnix.ca](mailto:am.janviau@gymnix.ca) \*\*\*

**- No refunds will be issued after the deadline -**





# THANK YOU !

Gymnix Classic  
 1000 Emile-Journault Avenue, Montreal (QC), H2M 2E7  
[www.internationalgymnix.ca](http://www.internationalgymnix.ca)